

Time

Review What You Know

1. Circle the event that takes more time.



2. Circle the event that takes less time.



3. Fill in the missing numbers in the pattern.

0, 5, 10, 15, _____, 25, _____



Home-School Connection

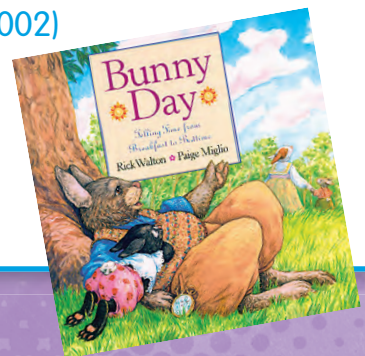
Dear Family,
Today my class started Topic 10, **Time**. I will learn to tell time to the hour and half hour. Here are some of the new math words I will be learning and some things we can do to help me with my math.

Love, _____

Book to Read

Reading math stories reinforces concepts. Look for this title in your local library:

Bunny Day: Telling Time from Breakfast to Bedtime
by Rick Walton
(HarperCollins, 2002)



Home Activity

Help your child make a schedule of the activities he or she does on a school day. Include the time each activity starts.

Tuesday Schedule	
7:30	eat breakfast
8:00	go to school
3:00	come home
3:30	do homework
5:00	eat dinner

My New Math Words

hour hand

The short hand is the hour hand. The hour hand shows the hour.



It is 4 o'clock.

minute hand

The long hand is the minute hand. The minute hand shows the minute.



It is 4:30.

schedule

a list that shows what time events happen

Library Schedule	
Time	Activity
1:30	Story Time
2:00	Crafts
3:00	Computers
3:30	Homework Help

Time Counts

Number of players: 2

How to Play

1. Take turns. Choose a spinner. Spin and read the time.
2. Find the clock that shows the time you spun. Say the time. Then cover the clock with a counter.
3. If the clock is already covered, your turn is over.
4. Play until all of the clocks are covered.



What You Need

- 12 counters
- 2 paper clips
- 2 pencils



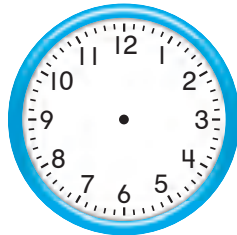
Name _____

Understanding the Hour and Minute Hands



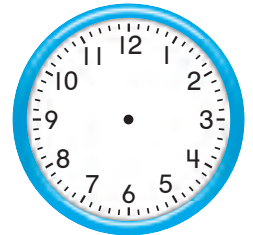
1.

_____ o'clock



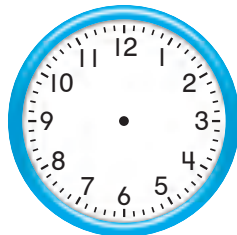
2.

_____ o'clock



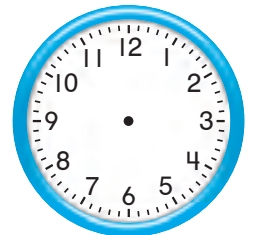
3.

_____ o'clock




4.

_____ o'clock

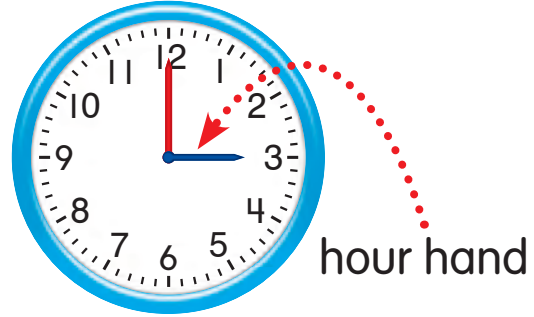


Home Connection Your child told time to the hour and showed the time by drawing hands on a clockface.

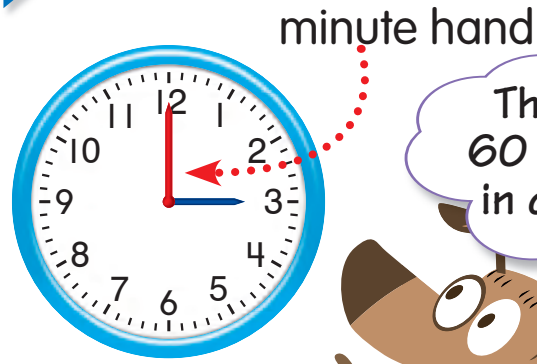
Home Activity Draw a clock face with the time on the hour and ask your child to read it.

MG 1.0  **Grade K** Students understand the concept of time and units to measure it; they understand that objects have properties, such as length, weight, and capacity, and that comparisons may be made by referring to those properties.

The short hand is the **hour hand**.
The hour hand points to the **hour**.

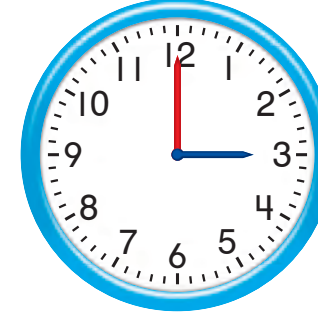


The long hand is the **minute hand**.



There are **60 minutes** in an hour.

When the minute hand points to 12, we say **o'clock**.



The hour hand is on 3. The minute hand is on 12.

This clock shows 3 o'clock.

Guided Practice

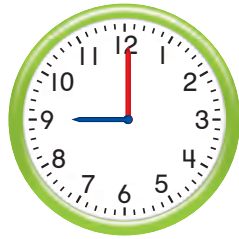
Write the time shown on each clock.

1.



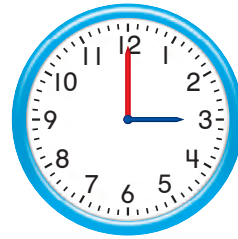
4 o'clock

2.



9 o'clock

3.



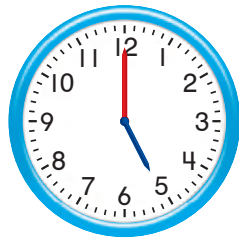
3 o'clock

4.



7 o'clock

5.



5 o'clock

6.

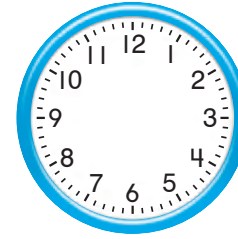


8 o'clock

Independent Practice

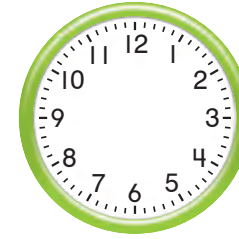
Draw the hour and minute hands to show the time.

7.



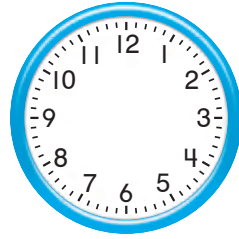
10 o'clock

8.



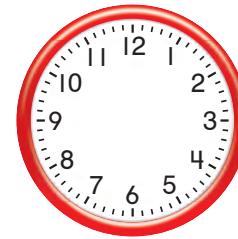
2 o'clock

9.



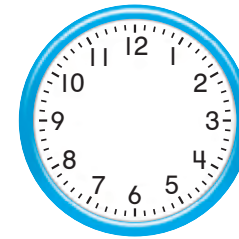
11 o'clock

10.



12 o'clock

11.



6 o'clock

12.



1 o'clock

Reasoning Write the time that is in between.

13.

8 o'clock

_____ o'clock

10 o'clock

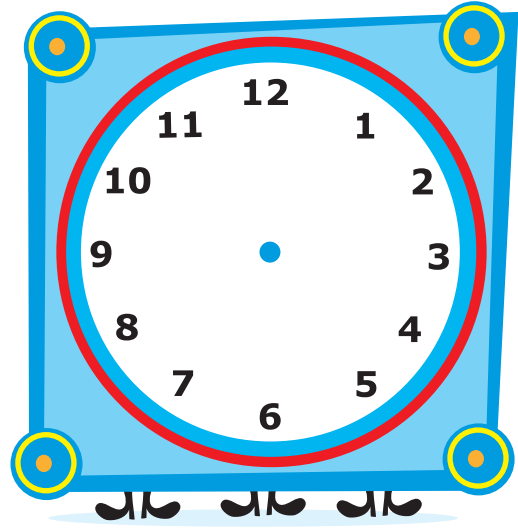
Word Bank

hour hand minute hand
hour o'clock
minute

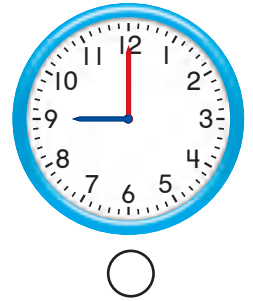
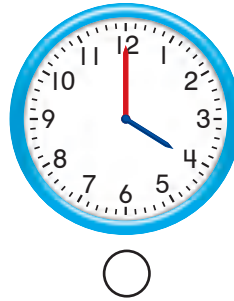
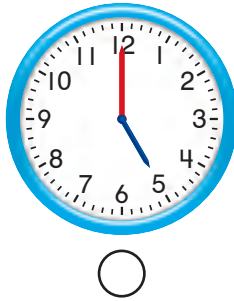
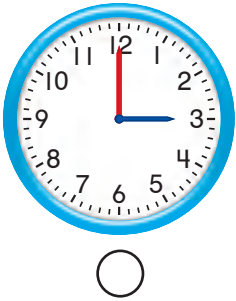
Problem Solving


Solve the problems below.

14. Sarah wakes up at 7 o'clock. Draw the hands on the clock to show 7 o'clock.



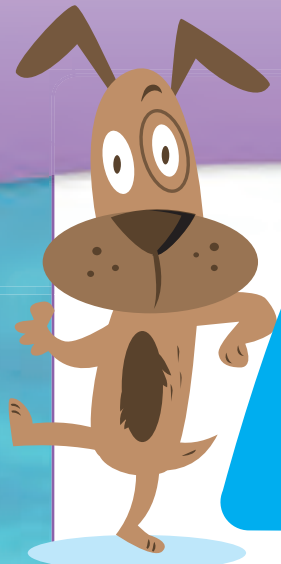
15. Bill likes to read at 4 o'clock every day. Which clock shows the correct time?



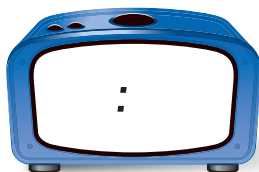
16.  **Journal** Write two activities you like to do. Draw a clock for each activity to show what times you might do them.

Name _____

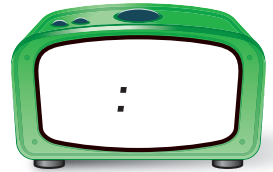
Telling and Writing Time to the Hour



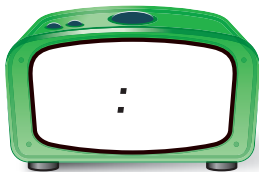
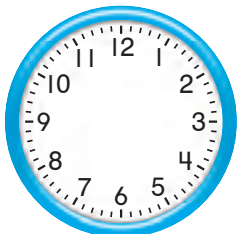
1.



2.



3.



4.

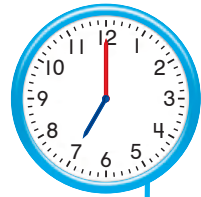


Home Connection Your child told and wrote time to the hour on analog and digital clocks.

Home Activity When the time is on the hour, ask your child to look at a clock or a watch and then tell and write the time.

MG 1.4, Grade K Identify the time (to the nearest hour) of everyday events (e.g., lunch time is 12 o'clock; bedtime is 8 o'clock at night).

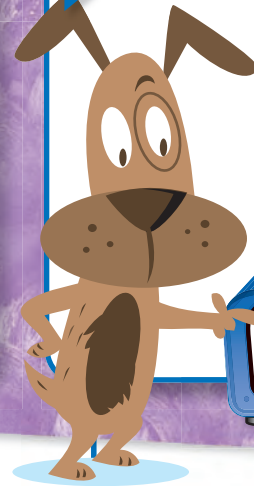
Luke eats breakfast at 7 o'clock.



This clock shows 7 o'clock.



This clock shows 7 o'clock another way.



7:00

7 tells the hour.
00 tells the minutes.

You write 7:00 and say 7 o'clock.

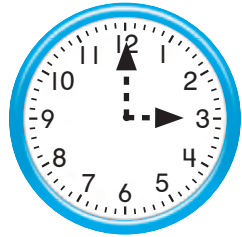


7:00

Guided Practice

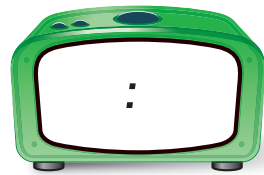
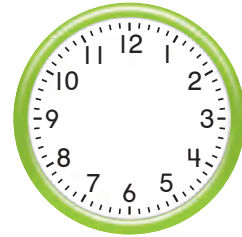
Draw the hands on each clock face.
Then write the time on the other clock.

1.



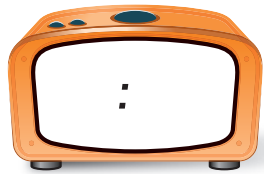
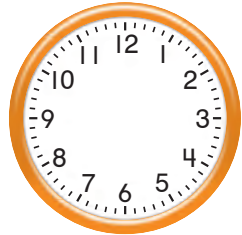
3 o'clock

2.



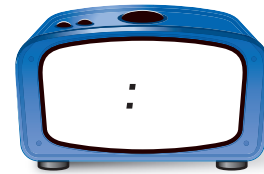
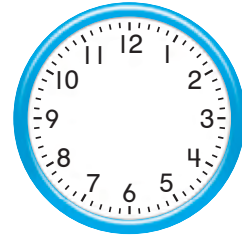
5 o'clock

3.



12 o'clock

4.



11 o'clock

Independent Practice

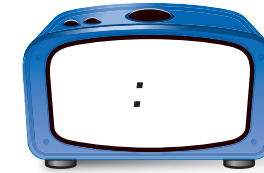
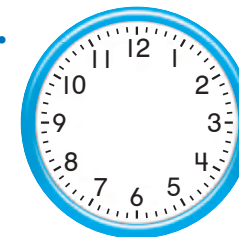
Draw the hands on each clock face.
Then write the time on the other clock.

5.



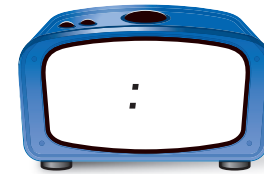
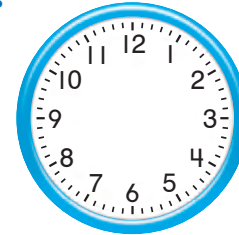
2 o'clock

6.



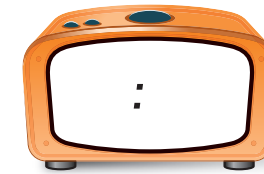
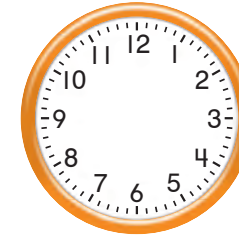
4 o'clock

7.



6 o'clock

8.



9 o'clock

Do you understand? How far does the hour hand move in one hour? How far does the minute hand move in one hour?

Algebra Write the missing times.

9. 6:00, 7:00, ___ : ___, 9:00, 10:00, ___ : ___

Problem Solving


Solve the problems below.

10. Raul starts riding his bike at 1:00.
He rides for 1 hour.
What time does Raul stop?
Draw the clock hands.
Then write the time.



11. Which clock shows the same time as this clock?



12.  **Journal** How are a digital clock and a clock with a face different?

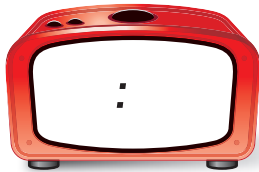
Four horizontal blue lines for writing the answer.

Name _____

Telling and Writing Time to the Half Hour



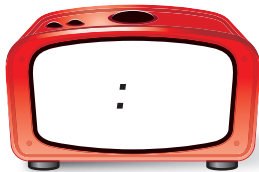
1.



At _____, the hour hand is between _____ and _____.

The minute hand is on _____.

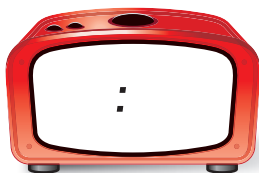
2.



At _____, the hour hand is between _____ and _____.

The minute hand is on _____.

3.



At _____, the hour hand is between _____ and _____.

The minute hand is on _____.

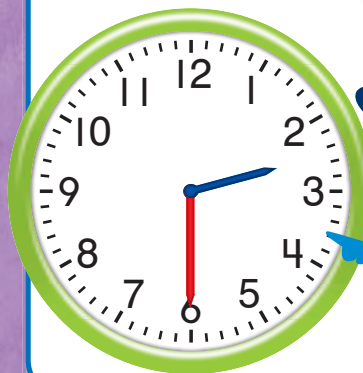


Home Connection Your child told and wrote time to the half hour on analog and digital clocks.

Home Activity Notice whenever your clock at home shows the half hour. Ask your child to tell and write the time.

MG 1.2 Tell time to the nearest half hour and relate time to events (e.g., before/after, shorter/longer).

A **half hour** is 30 minutes.



When the minute hand is on 6, we can say 30 or half past the hour.



The hour hand is halfway between 2 and 3.



It is half past 2 or 2:30.



Guided Practice

Write the numbers to complete each sentence.
Write the time.

1. The hour hand is between

7 and 8.

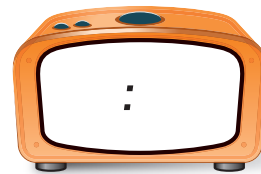
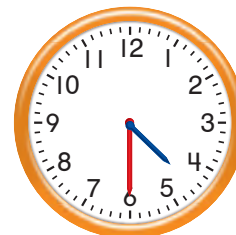
The minute hand is on 6.



2. The hour hand is between

_____ and _____.

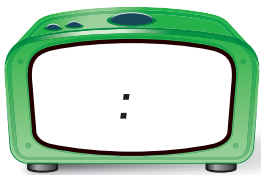
The minute hand is on _____.



3. The hour hand is between

_____ and _____.

The minute hand is on _____.

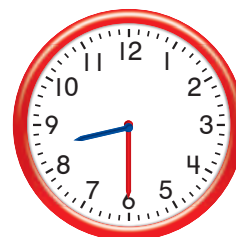


Do you understand? Why is the hour hand between 6 and 7 when it is 6:30?

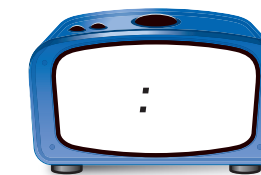
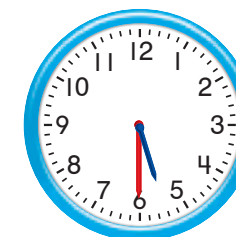
Independent Practice

Write the time shown on each clock.

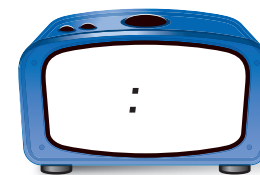
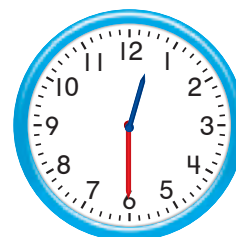
4.



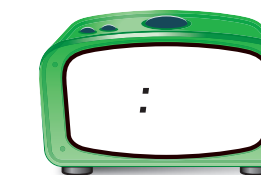
5.



6.



7.



Word Bank
half hour

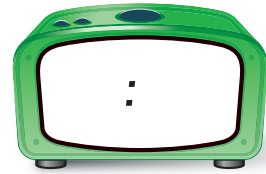
Algebra Look at the pattern.
Write the missing times.

8. 6:00, 6:30, 7:00, _____, 8:00, _____, _____

Problem Solving


Solve the problems below.

9. Sandy walked her dog at 3:00. She walked for 30 minutes. What time did she get home? Draw the clock hands. Write the time.



10. Which clock shows the same time as this clock?



11.  **Journal** Show 8:00 on the first clock. On the second clock, show the time 30 minutes later. Is the hour hand still on 8? Explain.



Name _____

Estimating and Ordering Lengths of Time



Activity

How long does it take?

about
1 minute

about
1 hour

about
1 day

about
1 minute

about
1 hour

about
1 day

about
1 minute

about
1 hour

about
1 day



Home Connection Your child chose three activities taking different lengths of time and estimated how long each would take.

Home Activity Ask your child about how long it will take to eat dinner. Then check the time to see how close the estimate was.

MG 1.2 Tell time to the nearest half hour and relate time to events (e.g., before/after, shorter/longer).

You can estimate about how long an activity takes.



about 1 minute

about 1 hour



about 1 day



You can order the activities from longest time to shortest time.





longest visiting a museum

playing a game

shortest washing hands

Guided Practice




About how long does each activity take?
Circle your estimate.

Activity	How long does it take?		
1. 	about 1 minute	about 1 hour	about 1 day
2. 	about 1 minute	about 1 hour	about 1 day
3. 	about 1 minute	about 1 hour	about 1 day
4. 	about 1 minute	about 1 hour	about 1 day

Do you understand? Which of the 4 activities above takes the most time? Which takes the least time?

Independent Practice

About how long does each activity take?
Circle your estimate.

Activity	How long does it take?		
5. 	about 1 minute	about 1 hour	about 1 day
6. 	about 1 minute	about 1 hour	about 1 day
7. 	about 1 minute	about 1 hour	about 1 day

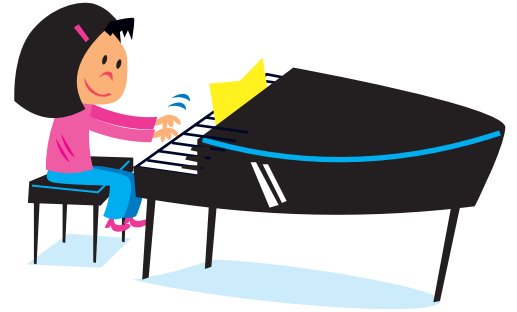
Reasonableness Put the activities from above in order from shortest time to longest time.

8. _____ shortest _____ longest

Problem Solving


Solve the problems below.

9. Jean is learning to play the piano. Should she practice each day for about 1 minute or about 1 hour?



10. Which activity takes the longest amount of time?



11.  **Journal** List or draw 3 things that you do in the morning. Write them in order with the shortest activity first.

Name _____



Problem Solving

Use Data from a Table

Afternoon Schedule

Time

Activity



Home Connection Your child created a schedule of activities and times.

Home Activity Work with your child to create a schedule for Saturday's activities.

MG 1.2 Tell time to the nearest half hour and relate time to events (e.g., before/after, shorter/longer).
Also **MR 1.2**.

Read and Understand

What class is between Reading and Recess in Mr. Diaz's room?



I can check the class schedule.

Plan

Mr. Diaz's Class Schedule

Time	Activity
8:00	Reading
9:00	Math
10:00	Recess
10:30	Art
11:30	Lunch

Solve



Math is between Reading and Recess. Math starts at 9 o'clock.

Look Back and Check



I can go back to the table to check my answers.

Guided Practice

Use Mr. Diaz's Class Schedule to answer the questions. Circle the activity that starts at the time shown.

1. Recess Art (Reading)

2. Art Recess Lunch

3. Reading Lunch Math

Do you understand? What happens 1 hour after Art begins?

Independent Practice

Use the schedule to answer the questions.

4. What activity do children do just before the Bird Watch?

5. What activity do children do just after Lunch?

6. What time does Pick Flowers begin?

7. Which activity starts at 12:00?

Word Bank schedule

Nature Trip

Time	Activity
10:00	Walk
11:00	Bird Watch
12:00	Lunch
12:30	Make a Birdhouse
1:30	Pick Flowers

Problem Solving

Use the table to answer the questions.

8. Which activities take a half hour?

Camp Schedule	
Time	Activity
12:30	 Swimming
1:30	 Baseball
2:00	 Snack
2:30	 Animal Talk
3:30	 Art

9. What time does Animal Talk begin?

12:30

1:30

2:30

3:30

10.  **Journal** Make a schedule of things you do after school.

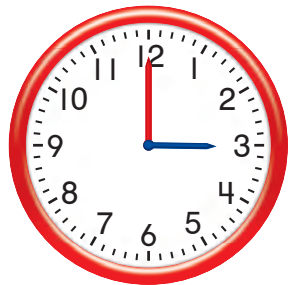
After School Schedule	
Time	Activity

1



- 6 o'clock 7 o'clock 11 o'clock 12 o'clock

2



3



- 6:30 6:00 1:30 1:00

Oral Directions Say: Mark the correct answer. **1.** Which time is shown on the clock? **2.** Which digital clock shows the same time as the clock with hands? **3.** Which time is shown on the clock?

Name _____

4

- 1 minute 1 hour 1 day 2 days

5

SPORTS CAMP SCHEDULE	
Time	Activity
10:00	Softball
11:00	Soccer
11:30	Swimming
12:30	Lunch
1:30	Tennis

- Softball Soccer Swimming Tennis

6

- 11:00 11:30 12:00 12:30

Oral Directions Say: Mark the correct answer. **4.** About how long does it take to pour a glass of milk? **5.** Use the table to answer this question. Which activity starts at 10:00? **6.** Use the table to answer this question. At which time does swimming begin?

Set A

You can draw the hour and minute hands to show the time.



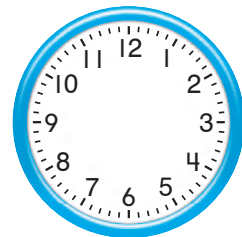
8 o'clock

Draw the hour and minute hands to show the time.

1 3 o'clock

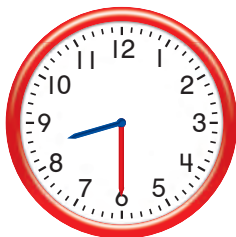


2 11 o'clock



Set B

What time do the clocks show?



half past 8

or 8 : 30

Write the time shown on each clock.

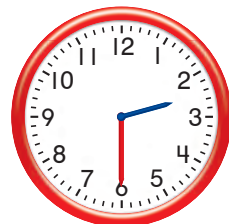
3



half past _____

or _____ : _____

4



half past _____

or _____ : _____

5



half past _____

or _____ : _____

Set C

You can order activities by the amount of time it takes to do them.



longest



shortest

Circle the activity that takes the shortest amount of time. Put an X on the activity that takes the longest amount of time.

6



Set D

You can estimate about how long an activity takes. Circle your estimate.



about
1 minute



about
1 day

About how long does each activity take? Circle your estimate.

7



about
1 minute

about
1 hour

about
1 day

8



about
1 minute

about
1 hour

about
1 day